



myCharge name, logo and Voyage are trademarks of RFA Brands. Patent Pending. Bluetooth is a registered trademark owned by Bluetooth SIG, Inc. ©2012 RFA Brands. All Rights Reserved.

Made in China. IB-RFAM0206

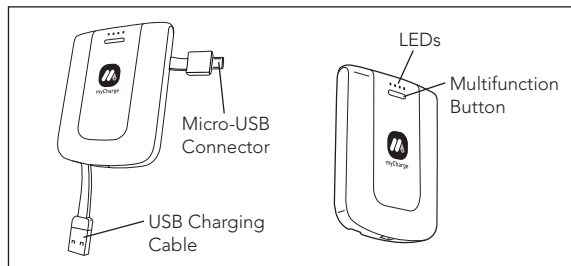
Owner's Manual

Thank you for
choosing myCharge
Voyage™ 1000

Thanks for choosing myCharge.

In The Box

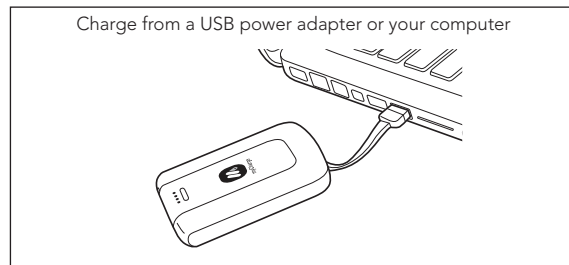
- myCharge Voyage
- Lanyard
- Owner's Manual
- Warranty Manual



Section I: Quick Start

1. Charge up your Voyage by plugging it into a USB power adapter or computer. As Voyage charges, LEDs on the unit will sequentially illuminate. When the unit is fully charged, all LEDs are lit. Press the level check button to see how much power is available.
2. Connect your device to the Micro-USB connector.
3. Unplug your device when it's charged and go! Your Voyage will automatically power off after your device is unplugged.

Section II: Charging Voyage



To charge your Voyage, connect it to a USB power source (USB-A to wall adapter, notebook USB port) with the on-board green USB input cable. Times to charge the Voyage vary based on what it's plugged into. You can expect a full charge from a USB adapter in about an hour and a half, or from a standard notebook USB port in about two and a half hours.

Note: It is normal for your Voyage to be warm to the touch while in use.

Section III: Charging Devices

Voyage uses an automatic device detection system. When a device is plugged in the Voyage provides charging power until it is unplugged or the Voyage runs out of energy. The Voyage Micro-USB connector is compatible with the majority of mobile devices including smartphones, Bluetooth headsets, portable navigation devices, MP3 players, and more.

Section IV: Checking Battery Level

To check how much energy is available, press the level check button. LEDs next to the button will illuminate indicating approximately how much energy is available for use.

LED 1 Flashing: Under 20%

LED 1: 21-40%

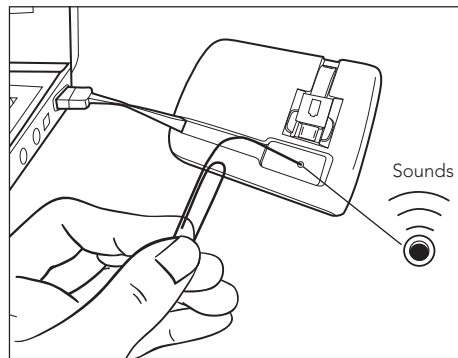
LED 2: 41-65%

LED 3: 66-90%

LED 4: 91-100%

Section V: Sound Mode

Voyage has built-in tone capability. Tone mode will audibly inform you when devices are plugged in or disconnected, and when the unit is charging or has completed charging.



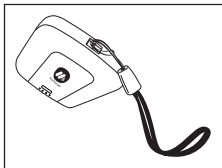
To disable, enable and/or change the sound mode

1. Locate the Sound pinhole button under the green USB-A cable
2. Plug Voyage into your PC
3. Use a paperclip to cycle Tone → Silent

If you prefer no sound toggle to the silent mode - unit will make no sound when this option is selected. If you prefer tone mode toggle until you hear the tone.

Section VI: Lanyard Strap

Your Voyage includes a lanyard strap for easy portability. To affix it to Voyage, slide the skinny loop of the strap under the rod in the opening, then pull the thick strap through the loop.



Section VII: Maintenance

To keep Voyage operating at its full potential, please do the following:

1. Re-charge every three months when not in use.
2. Keep dry and away from moist and corrosive materials.
3. To clean, wipe surface with dry cloth.

Section VIII: Product Specifications

Battery: 1000 mAh Lithium Polymer

Input:

USB-A: 5 VDC, 1.0 A

Output:

Micro-USB: 5 V, 1.0 A

Total Output Current: 5 V, 1.0 A

Section IX: Troubleshooting

My device is not charging: Confirm that your device is properly connected to the Micro-USB connector and the Voyage itself has energy (by pressing the level check button). LEDs indicate how much energy is available for use. If the Voyage has energy and your device is not charging, unplug it and plug it back in. If this still doesn't work, use your device cable to make sure the device is working properly.

I don't want the tone function on: Refer to Section V: Sound Modes.

For additional troubleshooting information and device compatibility, please visit: www.mychargepower.com

RFA Brands Service Center

Telephone: (888) 251-2026

Hours: 8:30 AM – 7:00 PM (ET)

Monday - Friday

E-mail: cservice@rfabrands.com