



myCharge name, logo and Sojourn are trademarks of RFA Brands. "Made for iPod" and "Made for iPhone" mean that an electronic accessory has been designed to connect specifically to iPod or iPhone, respectively, and has been certified by the developer to meet Apple performance standards. Apple is not responsible for the operation of this device or its compliance with safety and regulatory standards. Please note that the use of this accessory with iPod or iPhone may affect wireless performance. Apple, iTunes, iPhone, iPod, iPod classic, and iPod nano are trademarks of Apple Inc., registered in the U.S. and other countries. ©2012 RFA Brands. All Rights Reserved. Patent Pending.

Made in China. IB-RFAM0194

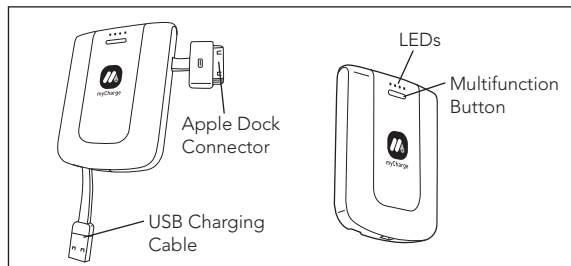
## Owner's Manual

Thank you for  
choosing myCharge  
Sojourn™ 1000

## Thanks for choosing myCharge.

### In The Box

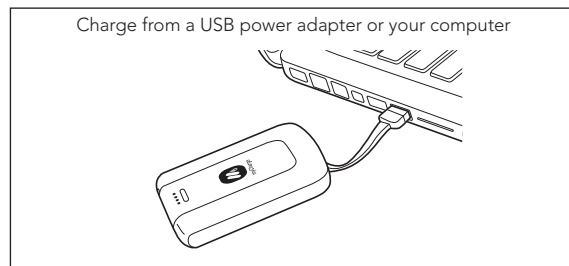
- myCharge Sojourn
- Lanyard
- Owner's Manual
- Warranty Manual



### Section I: Quick Start

1. Charge up your Sojourn by plugging it into a USB power adapter or computer. As Sojourn charges, LEDs on the unit will sequentially illuminate. When the unit is fully charged, all LEDs are lit. Press the level check button to see how much power is available.
2. Connect your iPod or iPhone to the Apple Dock Connector.
3. Unplug your iPod or iPhone when it's charged and go! Your Sojourn will automatically power off after your device is unplugged.

## Section II: Charging Sojourn



To charge your Sojourn, connect it to a USB power source (Apple iPhone adapter, notebook USB port) with the on-board green USB input cable. Times to charge the Sojourn vary based on what it's plugged into. You can expect a full charge from an iPhone USB adapter in about an hour and a half, or from a standard notebook USB port in about two and a half hours.

**Note:** It is normal for your Sojourn to be warm to the touch while in use.

### Section III: Charging Devices

Sojourn uses an automatic device detection system. When a device is plugged in the Sojourn provides charging power until it is unplugged or the Sojourn runs out of energy. The Sojourn Apple Dock Connector is compatible with iPhone and most iPod models.

### Section IV: Checking Battery Level

To check how much energy is available, press the level check button. LEDs next to the button will illuminate indicating approximately how much energy is available for use.

**LED 1 Flashing:** Under 20%

**LED 1:** 21-40%

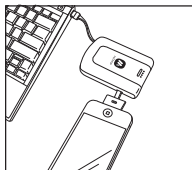
**LED 2:** 41-65%

**LED 3:** 66-90%

**LED 4:** 91-100%

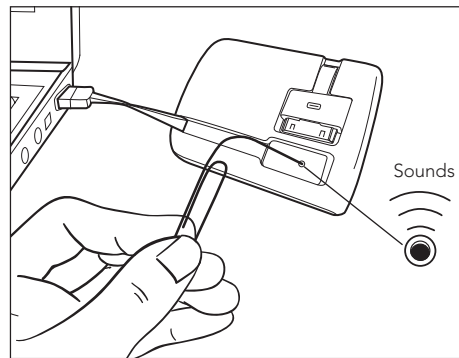
### Section V: Syncing

Plug Sojourn's on-board green USB input cable into your PC, connect your iPod or iPhone to the Apple Dock Connector, then press and hold the Sojourn power button for 2 seconds. Your device will begin to sync.



### Section VI: Sound Mode

Sojourn has built-in tone capability. Tone mode will audibly inform you when devices are plugged in or disconnected, and when the unit is charging or has completed charging.



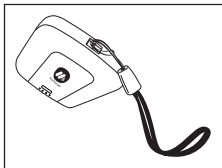
To disable, enable and/or change the sound mode

1. Locate the Sound pinhole button under the green USB-A cable
2. Plug Sojourn into your PC
3. Use a paperclip to cycle Tone → Silent

If you prefer no sound toggle to the silent mode - unit will make no sound when this option is selected. If you prefer tone mode toggle until you hear the tone.

## Section VII: Lanyard Strap

Your Sojourn includes a lanyard strap for easy portability. To affix it to Sojourn, slide the skinny loop of the strap under the rod in the opening, then pull the thick strap through the loop.



## Section VIII: Maintenance

To keep Sojourn operating at its full potential, please do the following:

1. Re-charge every three months when not in use.
2. Keep dry and away from moist and corrosive materials.
3. To clean, wipe surface with dry cloth.

## Section IX: Product Specifications

Battery: 1000 mAh Lithium Polymer

Input:

USB-A: 5 VDC, 1.0 A

Output:

Apple 30-pin: 5 V, 1.0 A

Total Output Current: 5 V, 1.0 A

## Section X: Troubleshooting

**My device is not charging:** Confirm that your device is properly connected to the Apple Dock Connector and the Sojourn itself has energy (by pressing the level check button). LEDs indicate how much energy is available for use. If the Sojourn has energy and your device is not charging, unplug it and plug it back in. If this still doesn't work, use your iPhone or iPod cable to make sure the device is working properly.

**My device doesn't sync with iTunes:** Refer to Section V: Syncing.

**I don't want the tone function on:** Refer to Section VI: Sound Modes.

For additional troubleshooting information and device compatibility, please visit: [www.mychargepower.com](http://www.mychargepower.com)

## **RFA Brands Service Center**

Telephone: (888) 251-2026

Hours: 8:30 AM – 7:00 PM (ET)

Monday - Friday

E-mail: [cservice@rfabrands.com](mailto:cservice@rfabrands.com)